

## The SNaP™ Cartridge is active if:

- **Green** Capacity Indicator is visible and stationary
- Dressing has a sucked down appearance
- Dressing is hard to the touch

## When should I change my device?

Replace the Cartridge when the **Red** Pressure Discharge Indicator is visible at the top of the Cartridge, if further treatment with the SNaP™ System is desired or indicated by your clinician.

**Visually inspect System at least every 8 hours.**

## General Precautions

- Contact your clinician if the Dressing leaks. If you cannot see your clinician within 24 hours, remove the Cartridge, Dressing and other dressing materials and cover the wound with sterile moist gauze or other dressing as instructed by your clinician.
- Immediately contact your clinician if you develop signs of infection such as increased swelling, fever, pain or redness at the wound area. Remove the Cartridge, Dressing, and other dressing materials and cover the wound with sterile moist gauze or other dressing as instructed by your clinician.
- Do not immerse any portion of the SNaP™ System in fluid.

L20898 rev. 09DEC07



# SNaP™

## WOUND CARE CARTRIDGE

### Patient/Caregiver Guide

#### Rx Only



Single Use Only



See Instructions for Use

Store at Room Temperature

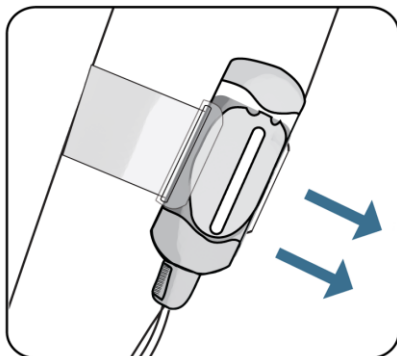


Spiracur Inc.  
1180 Bordeaux Dr  
Sunnyvale, CA 94089

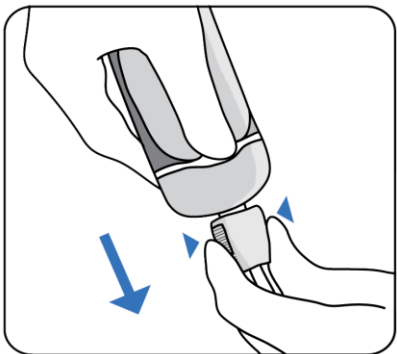
Tel: 877-SPIRACUR  
Fax: 888-392-9092  
customer@spiracur.com

## Instructions for changing the SNaP™ Wound Care Cartridge

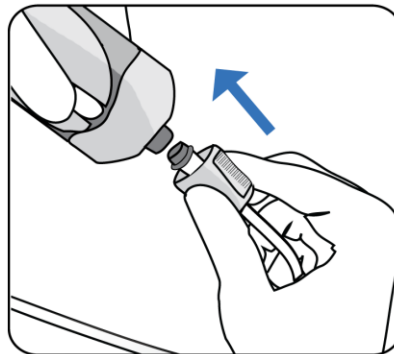
If the **Red** Pressure Discharge Indicator is visible at the top of the Cartridge, the SNaP™ Wound Care Cartridge will need to be replaced with a new Cartridge following the steps below if further treatment with the SNaP™ System is desired or indicated by your clinician:



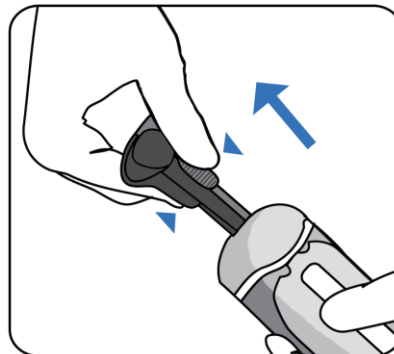
**Step 1** – Remove the Cartridge from carrying Clip.



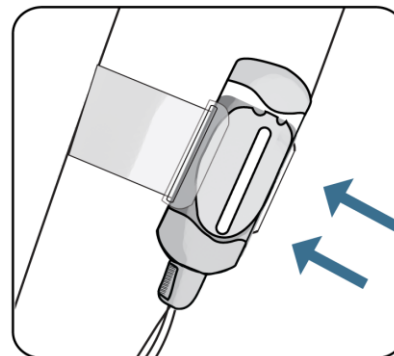
**Step 2** – Squeeze the Release Buttons on the Tube Fitting and pull the Tube Fitting out of the Cartridge.



**Step 3** – Take a new Cartridge and insert the Tube Fitting into the new Cartridge.



**Step 4** – Remove the Activation Key from the new Cartridge by squeezing the Activation Tabs and pulling it completely out of the Cartridge.



**Step 5** – Place Cartridge into carrying Clip



When the Strap is placed around an extremity, take care to ensure that the Strap is not placed too tightly as this may cause discomfort or potentially decrease blood flow to the extremity.